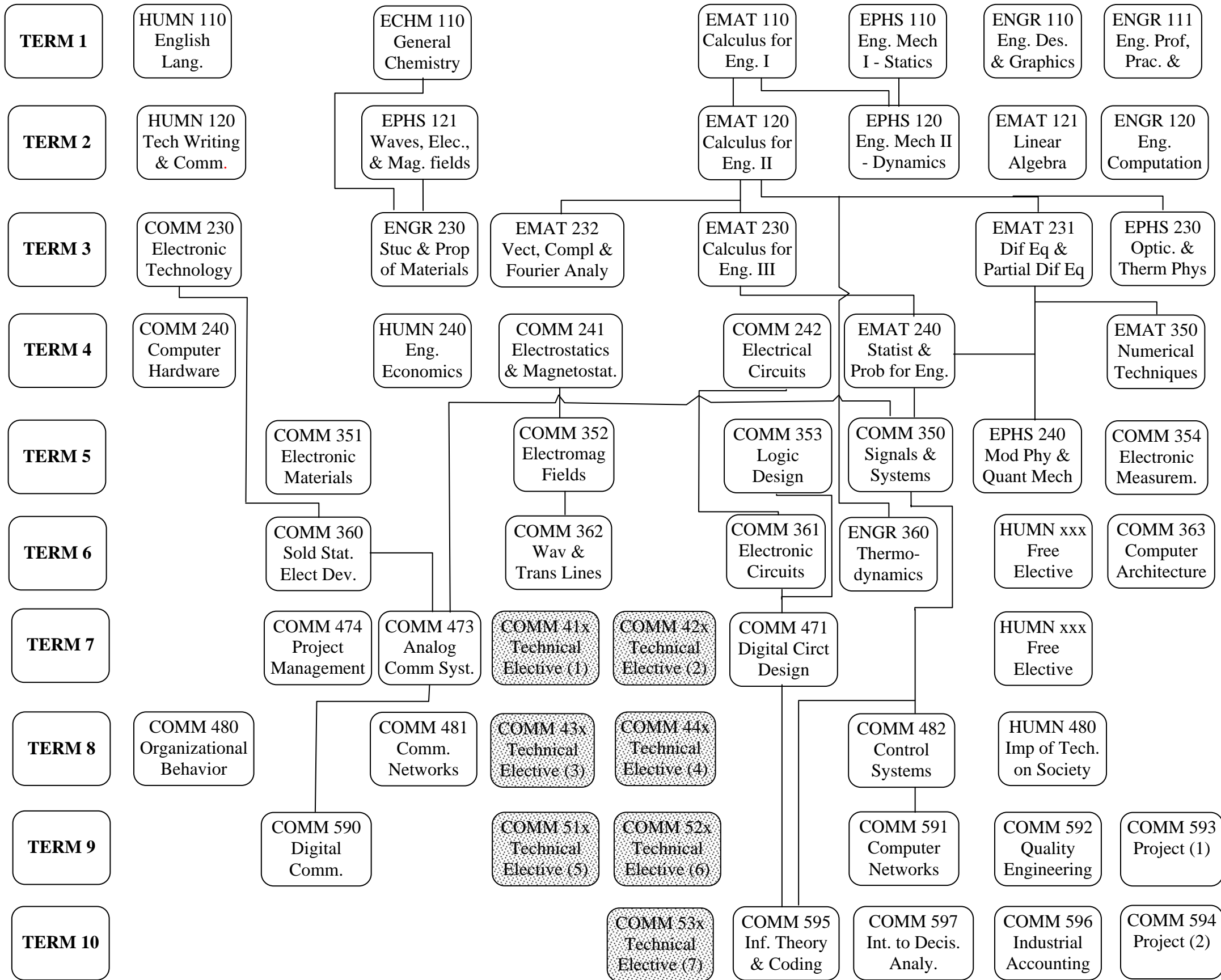




**STUDENT STUDY PLAN FOR COMMUNICATION SYSTEMS ENGINEERING PROGRAM**



Prerequisites of these courses are listed in the attached sheet.



## PREREQUISITES OF TECHNICAL ELECTIVE COURSES

### **Technical Elective (1)**

COMM 410	Optoelectronic devices	(Prerequisite: COMM 351, COMM 360)
COMM 411	Microwave Circuits	(Prerequisite: COMM 362)
COMM 412	Data Analysis and Algorithms	(Prerequisite: COMM 353, ENGR 120)

### **Technical Elective (2)**

COMM 420	Digital Signal Processing	(Prerequisite: COMM 350, COMM 353)
COMM 421	Distributed Systems	(Prerequisite: COMM 363)
COMM 422	Analog Circuits	(Prerequisite: COMM 360, COMM 361)

### **Technical Elective (3)**

COMM 430	Microwave Devices	(Prerequisite: COMM 360, COMM 362)
COMM 431	VLSI Design	(Prerequisite: COMM 353)
COMM 432	Statistical Signal Processing	(Prerequisite: EMAT 240, COMM 350)

### **Technical Elective (4)**

COMM 440	Antenna Engineering and Propagation	(Prerequisite: COMM 360)
COMM 441	Embedded System Design	(Prerequisite: COMM 353, COMM 361)
COMM 442	Image Processing	(Prerequisite: COMM 350, COMM 371)

### **Technical Elective (5)**

COMM 510	Optical Communication Systems	(Prerequisite: COMM 473, COMM 481)
COMM 511	Wireless and Mobile Communications	(Prerequisite: COMM 473, COMM 481)
COMM 512	CAD for Digital Circuits	(Prerequisite: ENGR 120, COMM 353)
COMM 513	Multimedia Engineering	(Prerequisite: COMM 350)

### **Technical Elective (6)**

COMM 520	Network Security	(Prerequisite: COMM 350, COMM 481)
COMM 521	Acoustics	(Prerequisite: COMM 350)
COMM 522	Analog Integrated Circuit Design	(Prerequisite: COMM 361, COMM 422)
COMM 523	Satellite Communications	(Prerequisite: COMM 473)

### **Technical Elective (7)**

COMM 530	Integrated Optics and Optical MEMS	(Prerequisite: ENGR 230, COMM 360)
COMM 531	Audio and Video Encoding	(Prerequisite: COMM 350)
COMM 532	Microwave Measurements	(Prerequisite: COMM 430)
COMM 533	RF Circuit Design	(Prerequisite: COMM 361, COMM 422)